



Security Systems For Communication Facilities

Presenters:

Stacey Noble & Scott Meskin



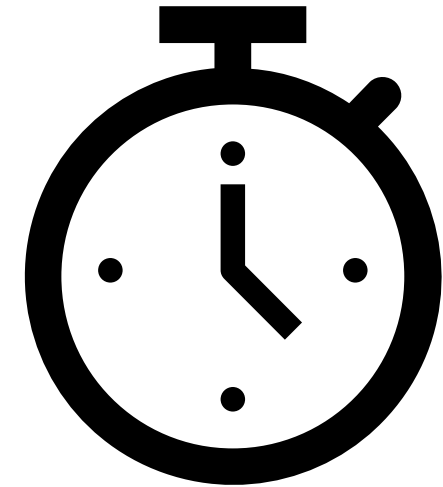
This Presentation Will Cover...

Who We Are...

Trends & Challenges for Communication Facilities

Possible Solutions

Things to Consider...



Who We Are...

Johnson Controls (JCI)

- Protecting People, Facilities, and Assets since 1874.
- JCI offers the world's largest portfolio of building technology, software as well as service solutions with some of the most trusted names in the industry (Fire, HVAC, & Security).



JCI Security Products

- JCI Security Products is a division within Johnson Controls.
- JCI Security Products is a manufacturer, and industry-solutions provider, of end-to-end access control, video surveillance, and intrusion systems.
- **Some of our Security Brands:** Software House, Kantech, American Dynamics, Exacq, DSC, Illustra Cameras and now... SES!



Security Enhancement Systems (SES)

- Next generation **remote site** security platform from Johnson Controls.
- Offers keyless access control and data analytics to efficiently protect specialized high-value, critical infrastructure.



Trends & Challenges for Communications Facilities

- Increases in Theft & Vandalism (Cyber & Physical)
- Site Access Control & Security
- Compliance
- Siloed-Security Functions (Organizationally & Technologically)

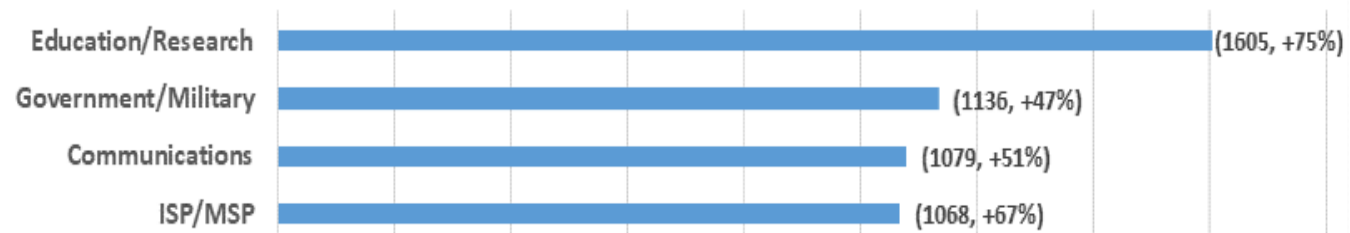


Increases in Theft & Vandalism (Cyber & Physical)



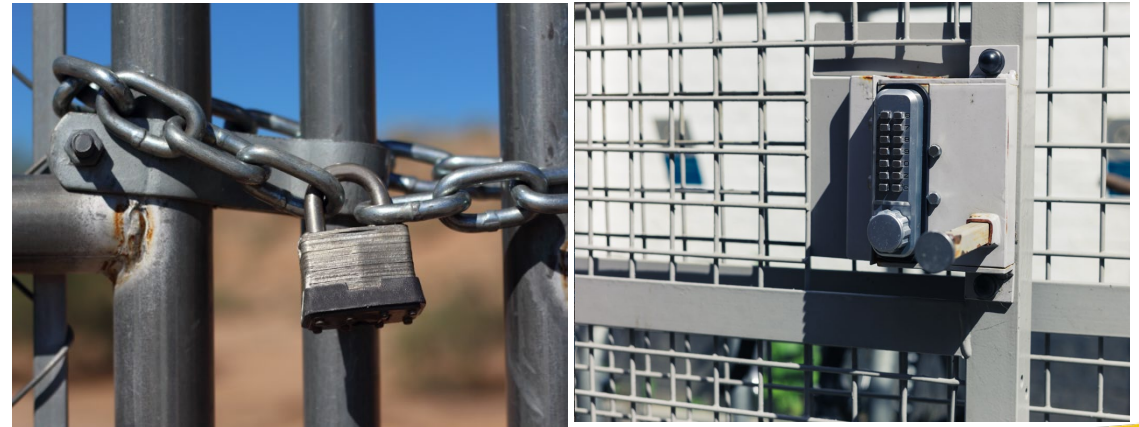
- Based on data from DOE, **physical attacks on the grid rose 77% in 2022** [1]. We also see the **average weekly cyber-attacks increasing by 51% in the Communications Industry** [2].
- Three men in Indiana broke into seven electrical substations and stole up to approximately **200 pounds of copper and ground wire**. The thefts resulted in damage to the substations and loss of power for customers [3].
- “Data shows that during the longer consecutive hours of power cuts **last year** [rolling blackouts], vandalism and battery or generator theft at base stations spiked, [the Company] said, resulting in tower companies recording a **250% increase in the loss of generators.**”[4]

Average Weekly Attacks per Organization by Industry (2021)



Site Access Control & Security

- **Challenge:** Organizations own/manage assets that have varying security needs (size, location, manned/unmanned, critical infrastructure).
 - **Examples:** Remote Cell Site, Manned Data Centers, Smart Pole, Office Building (“Brick & Mortar”), Warehouses, etc.
 - **Largest gap** is within the remote site access control space.
- **Management of physical keys and combinations is logistically complex, costly to maintain, and less secure:**
 - Cost of E-Keys & programming concerns
 - Employees/vendors leave the company with keys in hand and/or knowledge of lock codes
 - Downtime due to wrong keys & combinations
 - Costly vendor escorts



Compliance

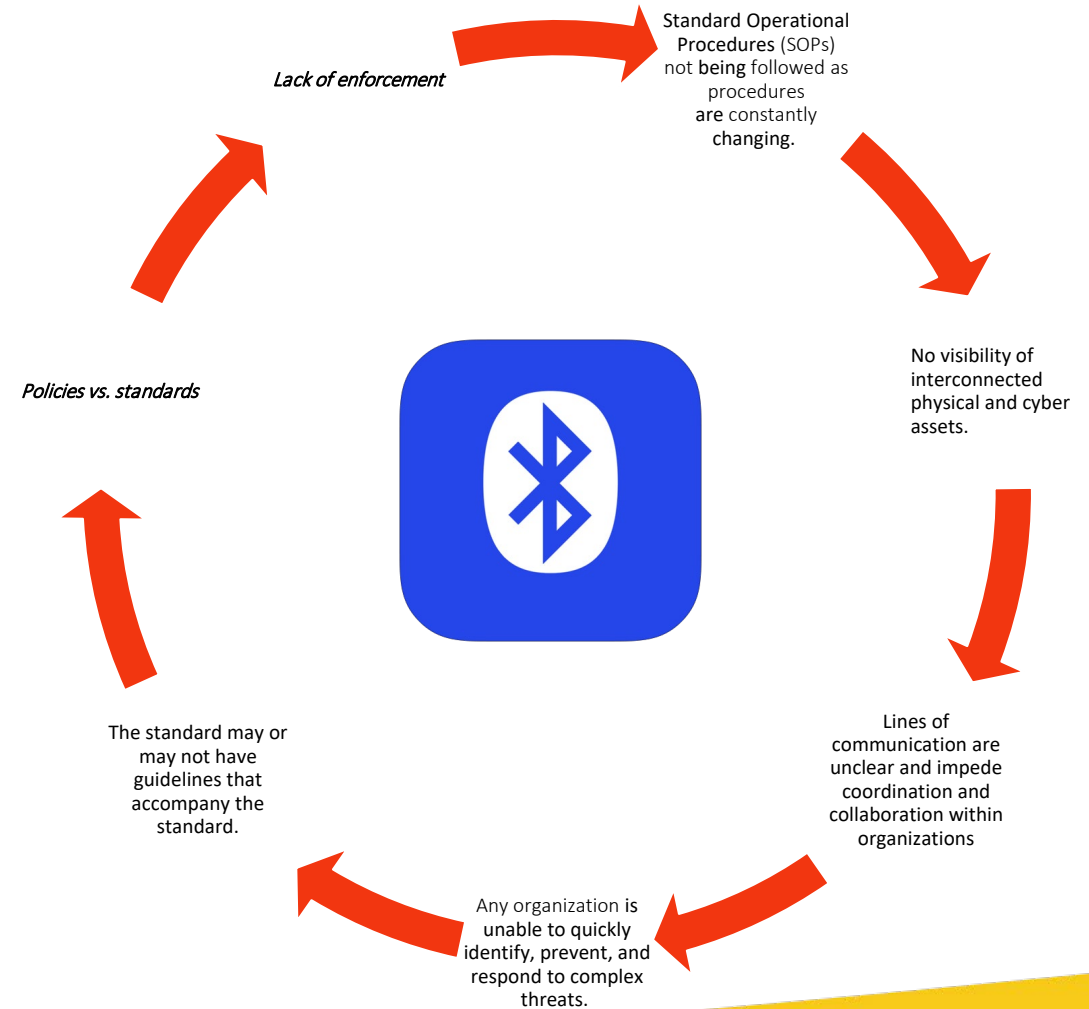
- There are lots of policies and standards to comply with when considering implementing new technology:
 - ATIS, NEBS, UL, CISA, FCC, NEC, & NFPA, FirstNet
 - These policies and standards change as new threats/challenges are identified.

Example:

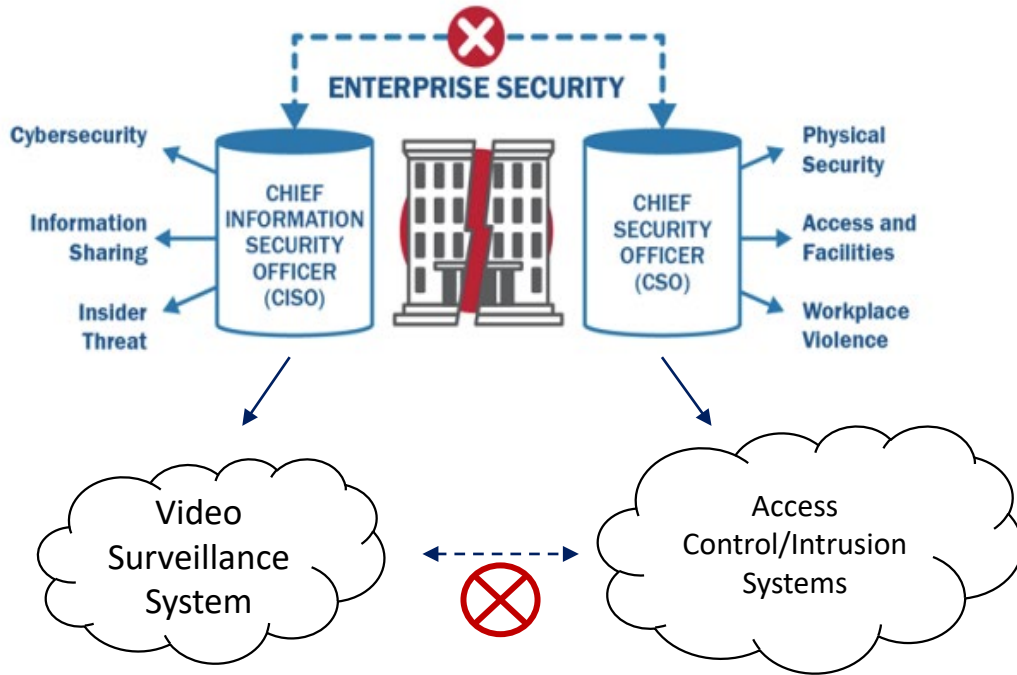
Traditional Remote Site Access Control (Call, Key, Logbook)

vs.

Bluetooth (BLE – 256-bit encryption), or Smartphone technology




Siloed Security Functions

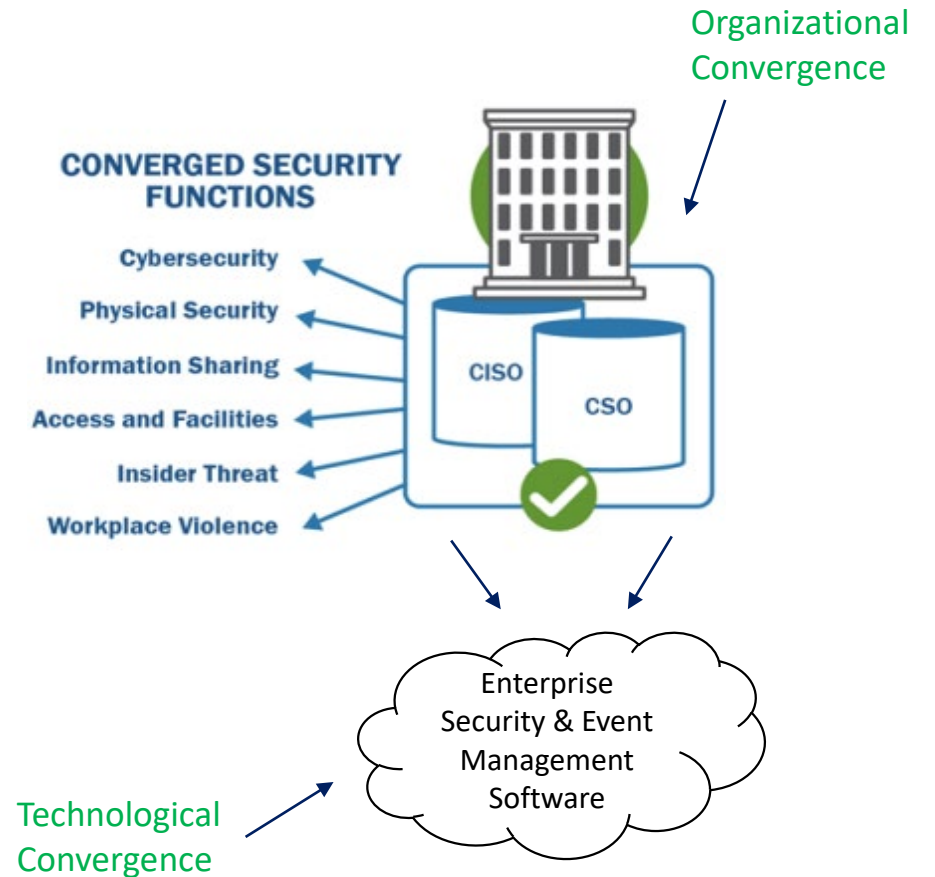


- **Organizationally & Technologically:**

- Security functions operate independently, with limited collaboration on enterprise-wide risks.
- Lines of communication are unclear and impede coordination and collaboration (“who is responsible for what?”).
- Organization is unable to quickly identify, prevent, and respond to complex threats
- Performing investigations, audits, reports is highly inefficient.

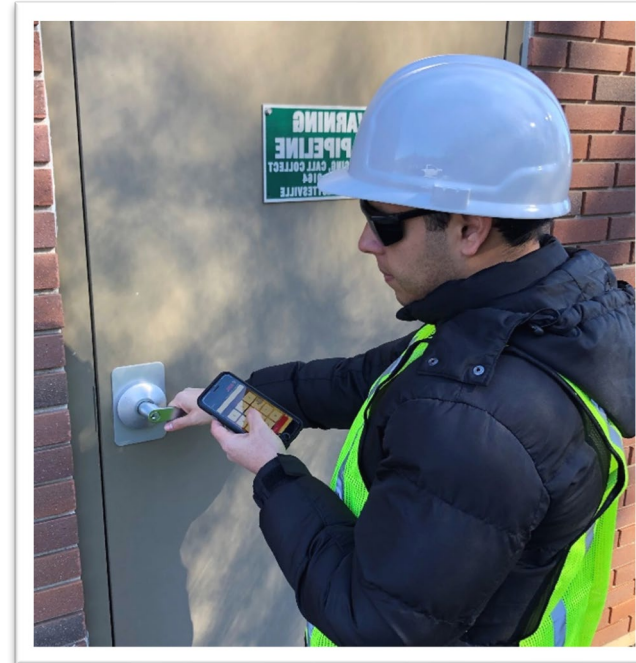
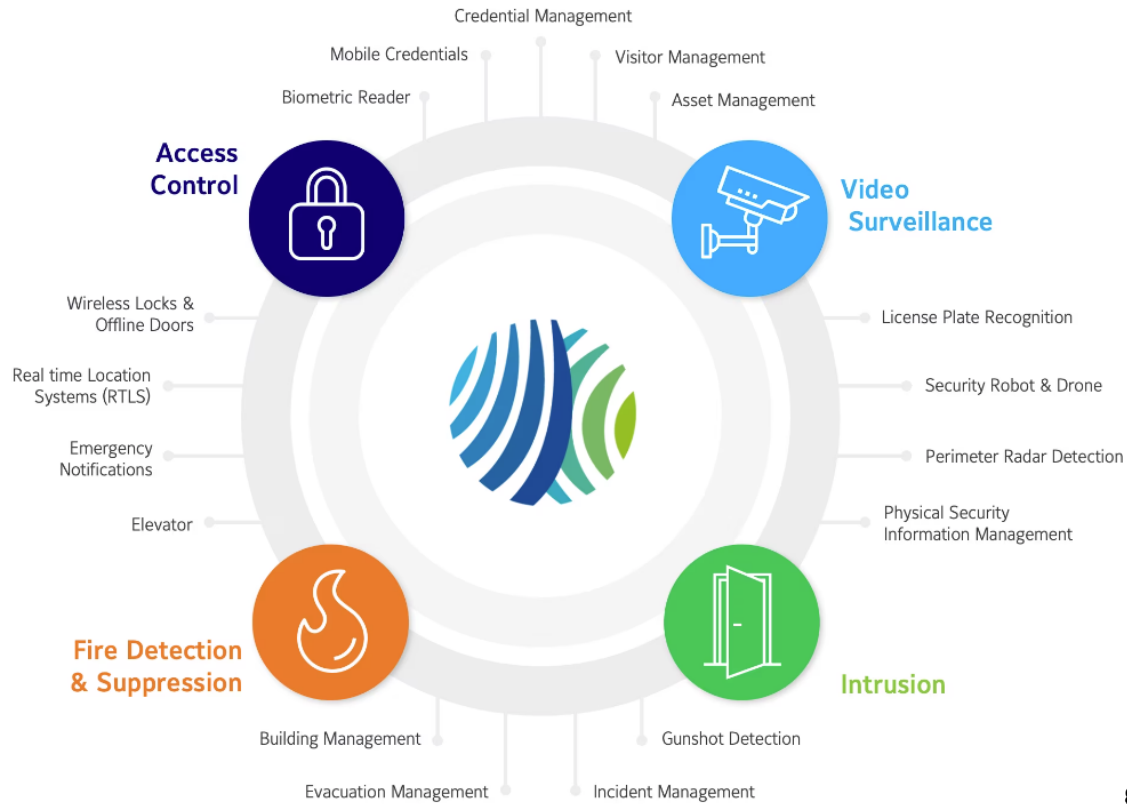
Solution: Convergence

- According to CISA, “**Convergence** is formal collaboration between previously disjointed security functions.”
- **Some Benefits of Convergence:**
 - Secure Enterprise ✓
 - Efficiency ↑
 - Versatility 
 - Strategic Alignment
- **Key Takeaway:** Organizations with converged cybersecurity and physical security **functions and technology** are more resilient and better prepared to **identify, prevent, mitigate, and respond to threats.**



Solution: Embracing New Technology & Integrations

↳ **Convergence
(Technologically)**



Remote Site: Bluetooth (BLE), or Smartphone technology (256-bit military grade BLE encryption) for personnel accesses into unmanned enclosures



Remote Site: Radar Detection, Camera Edge Analytics/AI, Drones

Enterprise Security & Event Management Software

Things to Consider...

- Performing a security assessment
- Understanding what security technologies are available today vs. tomorrow
- Establishing a *converged, enterprise-wide* security strategy

Resources:

[CISA - Cyber Security and Physical Security Convergence](#)

[CISA - Critical Infrastructure Assessments](#)

[DHS/FEMA's Homeland Security National Training Program \(Free Training\)](#)

[JCI Security Products](#)





Thank You!

To learn more, please reach out to us!



Security
Products



Scott Meskin

Regional Business Development Manager
Security Products, Access Control & Video Solutions

E-mail: Scott.Meskin@JCI.com

Cell: (561) 236-6869

Stacey Noble

Director, Business Development
Security Products, SES

E-mail: Stacey.Noble@JCI.com

Cell: (248) 835-8255