



Exothermic Connections

A focus on safety and process

Jeff Regan with Harger Lightning & Grounding

Safety

- Follow all procedures and warnings on instruction sheets
 - Check for job site or company PPE requirements
 - Safety Glasses and gloves to be used at all times
 - Arms should be covered and loose clothing secured



Safety

- Electronic Ignition is safer
 - 6' cord to get away from reaction
 - Accidental ignition protection
 - Audible and Visual ignition indicators
- Ensure proper mold for application
 - To avoid leaking weld metal



Safety

- Ensure proper mold for application
 - Verify connection type, conductors, and weld metal
 - Instructions at your finger tips
 - Correct mold reduces risk of leaking weld metal



Process

Step 1

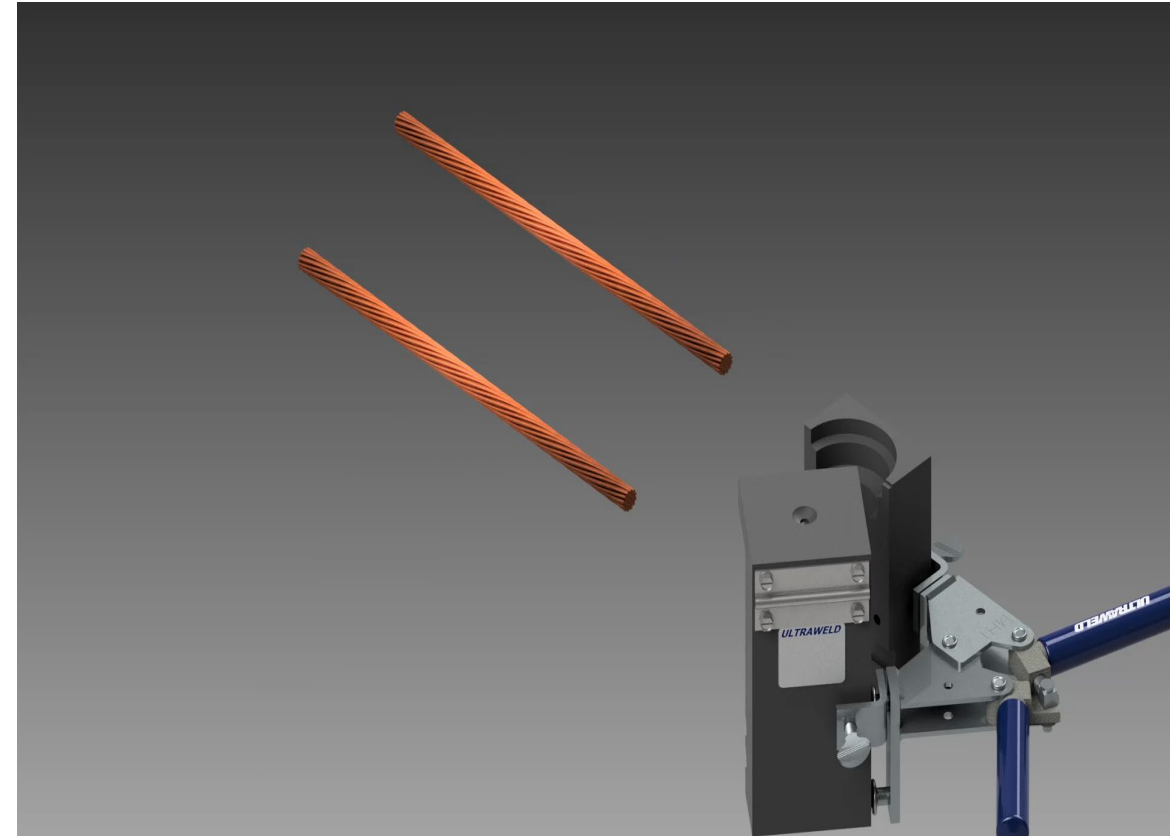
- Dry and clean the mold and conductor to eliminate moisture
 - The mold needs to be dried before the first weld of the day or if the mold has sat for an extended period time in between welds.



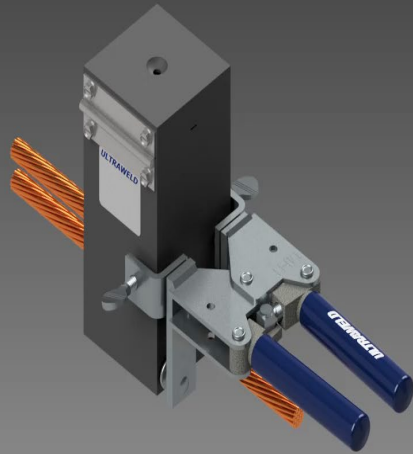
Process

Step 2

- Place the conductors into the mold and close
 - Inspect the parting line of the mold verifying the mold is completely closed and that there are no gaps
 - Make sure all components involved in the welding process are supported to ensure they do not move



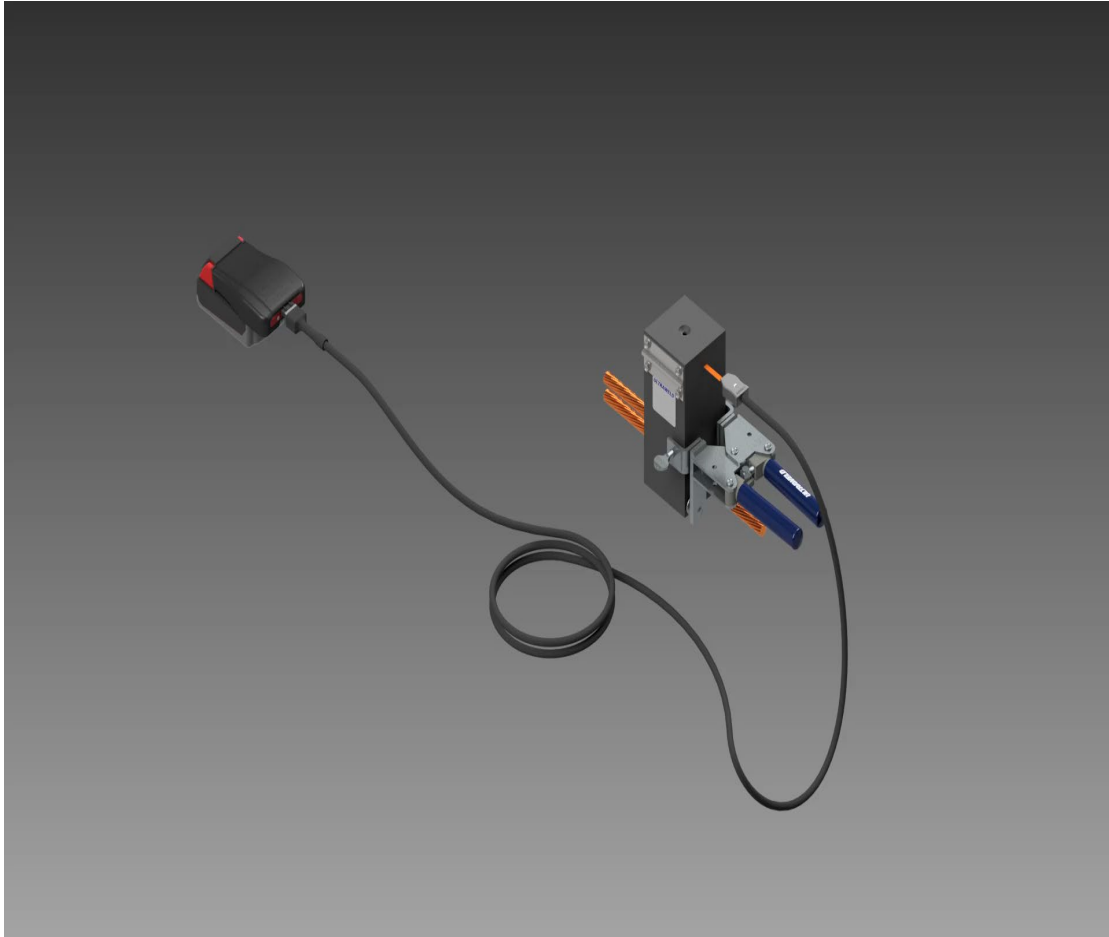
Process



Step 3

- Insert cartridge into mold, close the lid and attach the cord to the cartridge igniter
 - Make sure the igniter is inserted fully into igniter tip.

Process



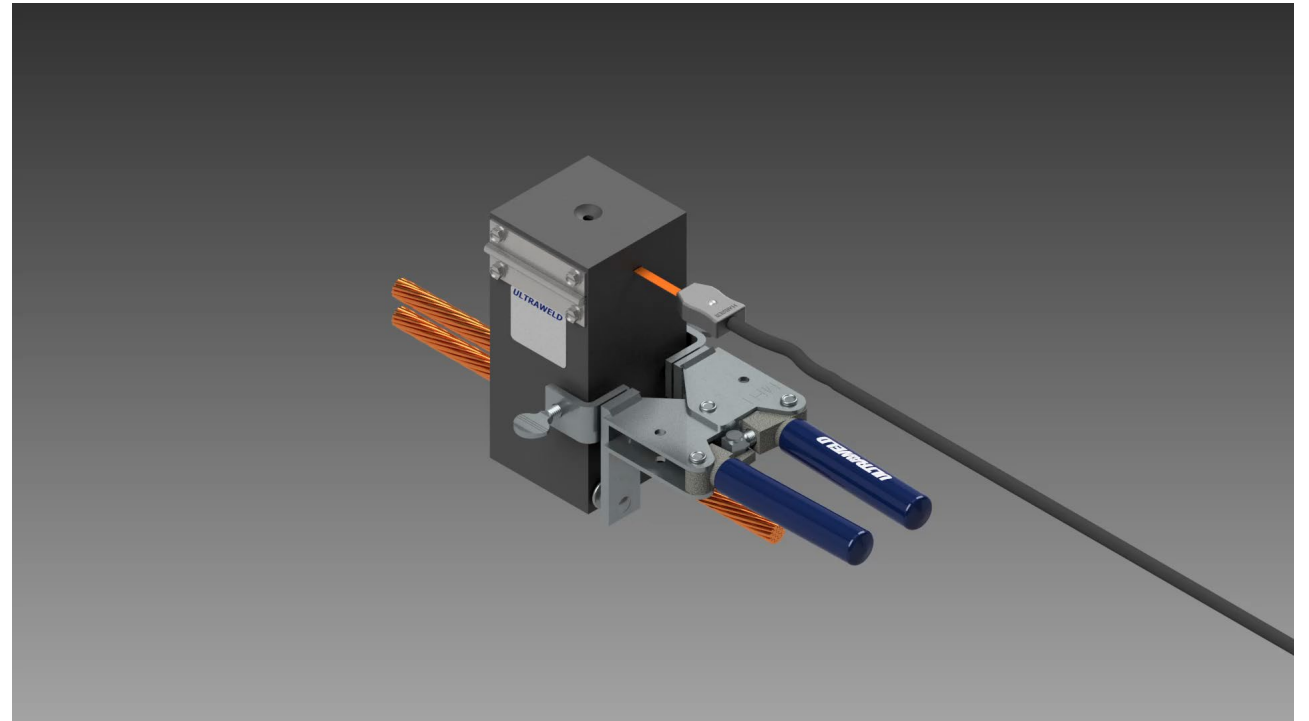
Step 4

- Start the reaction process by pressing both buttons on the controller

Process

Step 5

- Allow 15-20 seconds for the reaction to complete
- Open the mold and remove the connection and clean the mold prior to the next use



Thank you

Now we will go outside to see a
live demo

Jeff Regan with Harger Lightning & Grounding